



CHESS NUTS

Lakeridge Chess Club ♦ Volume 8 ♦ Issue 1 ♦ October 2005
Building critical thinking and creative problem solving skills

Lakeridge Chess Club welcomes new and returning players

WELCOME!

The Lakeridge Chess Club, now in its eighth year, welcomes many new and returning players. As we nurture our beginning players and watch our "Pups" acquire new chess skills, we appreciate our former club members who have moved on from Lakeridge and continue to volunteer at our club. Mercer Island chess clubs are thriving at all three elementary schools, Islander Middle School and MIHS!

With our online registration process now firmly established, we expect as many as 100 students to be learning chess at Lakeridge on Friday afternoons, nearly one fifth of all students!

On-line registration has streamlined the administration process, and given easy access to the team roster.

*To access your student's team roster, go to the registration website and click on the **Your File** tab. This shows students you have registered, and their teams. Click on **Team Name** and this will take you to the team page and roster.*



Your Chess Club Needs You!

The Lakeridge Chess Club depends on our parent and community volunteers to accomplish the myriad of tasks that are necessary to deliver a quality program for our students.

This year we still have a number of key vacancies,

- **Communications** (Chess Nuts about 3 - 4 x a year, Lion's Pride, Lion's Ledger)
- **Communications** (Web Master)
- **Tournament Coordinator** (NOT the Lakeridge Tournament. This person champions other tournaments and fosters a Lakeridge Tournament Team spirit)
- **Tournament Reporter**

In addition, students in each chess group benefits from **Team Managers**. Thank you to those taking on this invaluable role, and to all the volunteers who make the club so wonderful for our kids.

LAKE RIDGE CHESS TOURNAMENT DECEMBER 10TH, 2005

The Lakeridge Chess Club will host its Sixth annual Scholastic Chess Tournament on December 10th at Islander Middle School. Lakeridge students are given a head start on registration process through the on-line system. This tournament fills up quickly, so reserve your space!

As you can imagine, hosting a scholastic tournament for over 300 students requires many volunteers to tackle many tasks.

Thanks to Aninda Mattoo for agreeing to coordinate the Tournament this year.

We still need to recruit parents to assist with all aspects of this event, including Facilities, Trophies, Concessions, and Check-in/Runners. In addition to the advance planning volunteers we will need lots of willing hands on both Friday 9th and Saturday 10th December. If you can spare some time, please contact Aninda on AMattoo1@aol.com.

We need you all!



ASK DR. LEO

Meet our Head Coach



Dr. Stefurak, or Coach Leo, as students know him, graduated with a B.S., Summa Cum Laude, Phi Beta Kappa from the University of Washington and performed graduate research as the Kollmorgen Fellow in Color Technology at the Center for Human Information Processing at the University of California. He holds his Ph.D. in Cognitive Neuropsychology and performed applied post-doctoral research at the Tokyo Institute of Technology as a Monbusho Fellow, the Institute in Neuroscience at Dartmouth College, and the National Institutes of Health (NIH), University of Minnesota campus. Dr. Stefurak has won numerous scholarships and academic awards and has published papers in his field.

Dr. Stefurak is active in the chess and strategic gaming community as the President of the Seattle-based Chess Mates Foundation which is the second largest supporter of scholastic chess in the United States. He is a National and Life Chess Master in the United States Chess Federation and has played chess

around the world. Sporting a current rating of 2365, he occasionally finds time to compete in regional and national events.

Even more significant than these credentials is Coach Leo's willingness to give to our school community something that he finds important and fulfilling. "Chess develops your strength of will, increases perseverance, insight, problem-solving ability, creativity, and even helps younger players learn to read." A chess master's greatest resource is his or her imagination. Chess is an art, a science, and a sport.

Coach Leo is skilled at working with students at all ability levels. Dr. Stefurak has taught chess in schools for more than a decade and continues his chess teaching throughout the summer by providing week long chess camps to beginning, intermediate and advanced students of the game.

Dr. Stefurak was the 1999 recipient of the Katharine M. Bullitt Alliance for Education A+ Award. Dr. Stefurak received the Superintendent's Award in 2004 for his work with Seattle Public Schools. In the spring of 2005, Coach Leo was instrumental in leading the Islander Middle School team to a Third Place National Team Title. Coach Leo looks forward to working with students at Lakeridge Elementary during the coming chess season

Lakeridge Chess Club Welcomes All Students

Please come and enjoy playing chess with your friends while learning from Lakeridge's team of experienced chess coaches. Students are placed with other players of comparable chess-playing strength and are coached appropriate to their own performance level.

Chess is many things to many people. For students, chess is an intellectual contest of mind and will and has become a significant educational tool for stimulating critical thinking and creative problem solving. Chess is much more about figuring things out than about knowing what to do. To play chess is to learn. Parents and students involved in primary and secondary schools throughout America have seen chess make learning fun, witnessed chess bring families together, and seen their children make new friends while using their minds in innovative and insightful ways. Chess has become a part of modern education and is pro-family, pro-education and pro-social.

In elementary schools throughout the Puget Sound region, it is typical to see as many girls as boys participating in chess club and playing in scholastic chess tournaments on fall and winter Saturdays. The skills useful to generating successful chess play facilitate academic success and



ASK DR. LEO *Continued*

help to build personal confidence in expressing one's own ideas in concrete form. Chess is a robust game which engages much of the human mind and heart when played enthusiastically. Chess requires and uses many intellectual and perceptual competencies: careful observation, verbal strategy building, and insight into another's purposes and intentions.

Chess is narrative: each game tells a story and has a beginning, a middle, and an end with plot twists generated through the mutual creative efforts of two inventive minds at work. The players (i.e., opponents) create applicable chess sentences as they navigate their way through the course of a game. Chess players write their own script ('play-write') as they imagine their game into being.

Chess, like music and mathematics, has its own notational system, a collected body of work (games) dating back centuries, and permits innovation and improvisation in its expression. Chess helps to develop and support decision making skills in the face of incomplete information. Chess facilitates a powerful unification of perception, thought, will, and action in student development.

Girls learn chess in chess club and play with boys and girls in scholastic chess tournaments on an even playing field. Seattle is home to some of the strongest girl players in America. Girls regularly

win chess tournaments by defeating 5 boys in a row. Lakeridge is home to the current State Champion Girl's Elementary School Team! Seattle area schools annually field teams with participating boys and girls which finish in the top ten in national competition. Congratulations, girls and boys!

*“Seattle is home to some of the strongest girl players in America. Girls regularly win chess tournaments by defeating 5 boys in a row. **Lakeridge is home to the current State Champion Girl's Elementary School Team!**”*

Parents support extracurricular chess with their efforts and leadership as a supplement to their child's classroom education. Chess play and practice serve as positive, challenging, and character-building activities. Parents see the need for their children to develop healthy habits of mind and value the critical thinking and creative problem solving skills inherent in studying and playing chess.

The Lakeridge Elementary School Chess Club invites all students to participate in chess club on Friday afternoons. Boys are welcome; girls are welcome: all parents and students are welcome! Chess is a fun and educational activity that

teaches logic, goal-oriented thinking, and creativity by means of a hands-on cooperative dialog between two players. Chess as a sport, a science and an art allows students to interact in a positive, life-affirming, and enriching way.

Q. Do you have any software packages or books that you can recommend to our novice students?

A. I recommend the instructional chess software, "ChessMaster 10,000" by Mindscape. I suggest that parents do not invest in hand-held chess playing devices. They tend to be overpriced and underpowered.

I have found the following chess books to be good for novice and beginning players:

- Bobby Fischer Teaches Chess by B. Fischer, S. Margulies, and D. Mosenfelder, 1966,
- Better Chess for Average Players by Harding.
- Learn Chess by John Nunn, 2000
- Chess Tactics for Students by John Bain, 1993

Let's play chess!

— *Dr. Leo*

© Dr. Leo/Dr. Chess, September 2005



ALL ABOUT TOURNAMENTS!

An Introduction to Tournament Play

Most tournaments include five games of chess regardless of outcome. Students are paired with players from other schools and grouped by grade level. Usually Kindergarteners through 3rd graders play against each other and 4th through 6th graders play against each other. As games are won and lost, players are matched to play others with similar scores. A lot of learning happens at chess tournaments as new game and personal strategies are explored.

Tournaments generally last all day. There is usually a concessions stand to buy food and drinks. Between rounds you can talk about your game, reflect on your mistakes or quietly savor your victory. Bring your chess set, books and games. It's also fun to bring a ball, Frisbee or jump rope for outside play between rounds. Moms, dads and siblings can play chess with you between rounds, watch you play your match, read a good book or talk to friends.

Pairing sheets are posted before the start of each round of play. The pairing sheet tells you who you play against, the table number where you will play and the color, black or white, of the chess pieces for that game.

The tournament director will tell you when to start. Shake hands with your opponent and make your move. Remember the touch piece rule and think **checks, captures and threats!** No talking. If you have a question or need to go to the bathroom during play, raise your hand for the judge to help.

When you finish your game, leave the pieces where they are and raise your hand. A judge will come over to your table and ask you who won and record the result. Shake hands with your opponent and set up the board for the next game. Leave the play area quietly. Remember to be humble when you win and a good sport when you don't.

Your club will give you fliers on upcoming tournaments. Have your mom or dad fill out the registration form. Sign up early!



What can parents do at chess tournaments?

Tournament play is habit forming! Here are some ideas that may help make the day more fun for both our kids and parents...

- Come a little early and save a few tables so that the Lakeridge team can hang out together
- Encouraging our kids to wear their Lakeridge chess shirts so that they look like a team and are easy to spot and connect with.
- Encouraging carpools, especially when more than one parent can come.
- Host a small potluck with a few families and invite a coach. These evenings are usually informal and a lot of fun for all.
- Let others in the club know if you've signed up for a tournament. Sometimes other families will follow your lead.
- Identify the whole Lakeridge team on team trophies and have kids present their team trophy to Mr. Allen on Monday morning before school.
- Bring different sports equipment, puzzles and/or games and drawing supplies that encourage between game play.
- Lead group activities (like PALs during Lakeridge recess) making down times more fun.
- Start a team score sheet. Focus on "playing ones' best", good sportsmanship and learning from mistakes, rather than winning and losing.
- Volunteer! There are lots of jobs that parents can help out with at tournaments.





Upcoming Chess Tournaments and Events

October 2005

Oct 9 National Chess Day Girl's Only Challenge (K-12), Cooper Mountain, Beaverton, OR. This tournament is named after U.S. President Gerald Ford's recognition to the value of the game of chess on October 9, 1976. Multiple age and ratings based events will be offered. This is a 100% pre-registered event limited to 100 players. Contact Lisa Kudva, 503-430-5744, lakudva@comcast.net. and www.cmchessclub.org.

Oct 23 3rd Soccer Season Scholastic Quad (K-12), Portland CC, Portland, OR, Sudhakar Kudva, (503) 430-5744, www.aboutchess.org

Oct 29 St. Michael U1000 Tournamentt & Over 900 Challenge Cup (K-3, 4-8), Olympia, WA, Jon Licht, 360-754-6472, jonjerrie@comcast.net.

November 2005

Nov 12 Nightmare's Gauntlet (K-8), Evergreen School, Shoreline, WA, Mary Clarfeld, chesstournament@evergreenschool.org

Nov 25 WA Class Scholastic, Bellevue, WA, David Hendricks, davidhendricks@comcast.net. There will also be a 1-day G/30 Scholastic Tournament associated with this event.

December 2005

Dec 2-4, 2005 National K-12 / Collegiate Championship, 2005 Hilton Americas, Houston & George E. Brown Convention Center 1001 Avenida de las Americas, Houston, TX 77010, 800-236-2905

Dec 3 Bryant Elementary School Fall Classic (K, 1-3, 4-6), 5 Round Swiss, WSRS rated, http://www.bryantschool.org/default.cfm?area=Activities&content=chess_club.

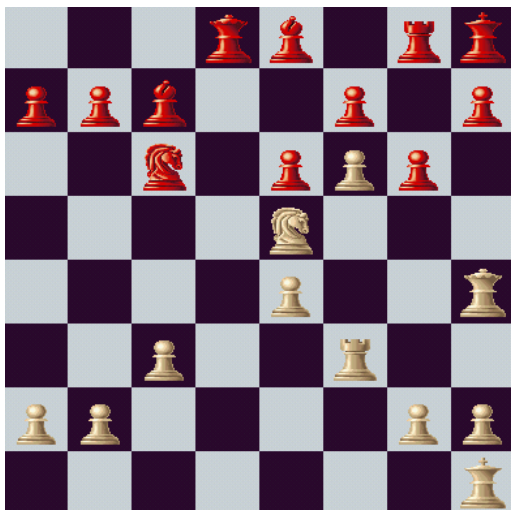
Dec 10 – 6th Annual Lakeridge Chess Tournament (K-6), Lakeridge Elementary School, Mercer Island, WA, <http://www.cmiregistration.com/user/org/category.jsp?id=5644&org=216>

More tournaments are being added daily on <http://www.nwchess.com/calendar/index.htm>

Remember to register EARLY!

Challenger Puzzle

White to play and win in 2 moves.



Useful Websites and Links

Don't forget to check out our own website at www.lakeridgechess.com

To check out your WSRS rating, visit the Ratings tab on our website and use the password 'thelion'

WA High School Chess Associations
<http://www.whsca.org/>

US Chess Organization
<http://www.uschess.org/>



The Lakeridge Chess Season

October 7
 October 14
 October 21
 October 28
 November 4
 November 11 - no school; non contract day
 November 18 - no club meeting (Noon Dismissal)
 November 25 - no club meeting (Thanksgiving)
 December 2
 December 9
 December 10 LAKERIDGE TOURNAMENT
 December 16
 December 23 - no club meeting (Winter Break)
 December 30 - no club meeting (Winter Break)
 January 6
 January 13
 January 20
 January 27
 February 3
 February 10
 February 17
 February 24 - no club meeting (Mid-Winter Break)
 March 3
 March 10
 March 17
 March 24
 March 31 - last meeting of the year!
 April 8 - Washington State Chess Tournament

*WA State Chess Tournament will be in Kennewick, Washington this year (Saturday, April 8th, 2006).

In order to qualify to play at State, a child must play in a tournament during the 2005-2006 school year and receive 3 out of 5 points in single tournament. LKD Chess Club hopes to have a strong showing at State again this year.

For the latest chess info, check our Website:

www.lakeridgechess.com

Note to parents:

Please let your child's Team Manager know if your child needs to miss chess club. Thank you.

Lakeridge Chess Club Board

Club Coordinator

Carolyn Hassall (275-0519) —
carolynhassall@comcast.net

Treasurer

Mihyung Kim — mihyung@hotmail.com

Communications/WebMaster

Carol Petrucci (230-8851), petrcarol@comcast.net

ChessNuts

OPEN—please contact Carolyn Hassall if you can help!

Local Tournament Coordinator

OPEN—please contact Carolyn Hassall if you can help!

Tournament Reports/Newspaper Liaison

OPEN—please contact Carolyn Hassall if you can help!

Special Events Chair

Deborah Hendrickson (425 785-4877) -
deborah_hendrickson@hotmail.com

Lakeridge Tournament Chair

Aninda Mattoo - (236 9917), AMattoo1@aol.com

Past Club Coordinators

Carol Petrucci (230-8851), petrcarol@comcast.net
 Mitch and Lisa Eggers (232-9661) leggers@comcast.net
 Buffi Guffi (Founder. Now living in West Virginia)

Head Coach

Leo Stefurak (Lions) — leolion@seanet.com

Lakeridge Chess Club Coaches

Coaches

William Schill (Bears) — williamschill@hotmail.com

Coach Chouchan (Cougars) —
chornyAA@msn.com

Mike Miller (Tigers) — jocemike@seanet.com

Al Walker (Pups) —
buckluckly@hotmail.com

